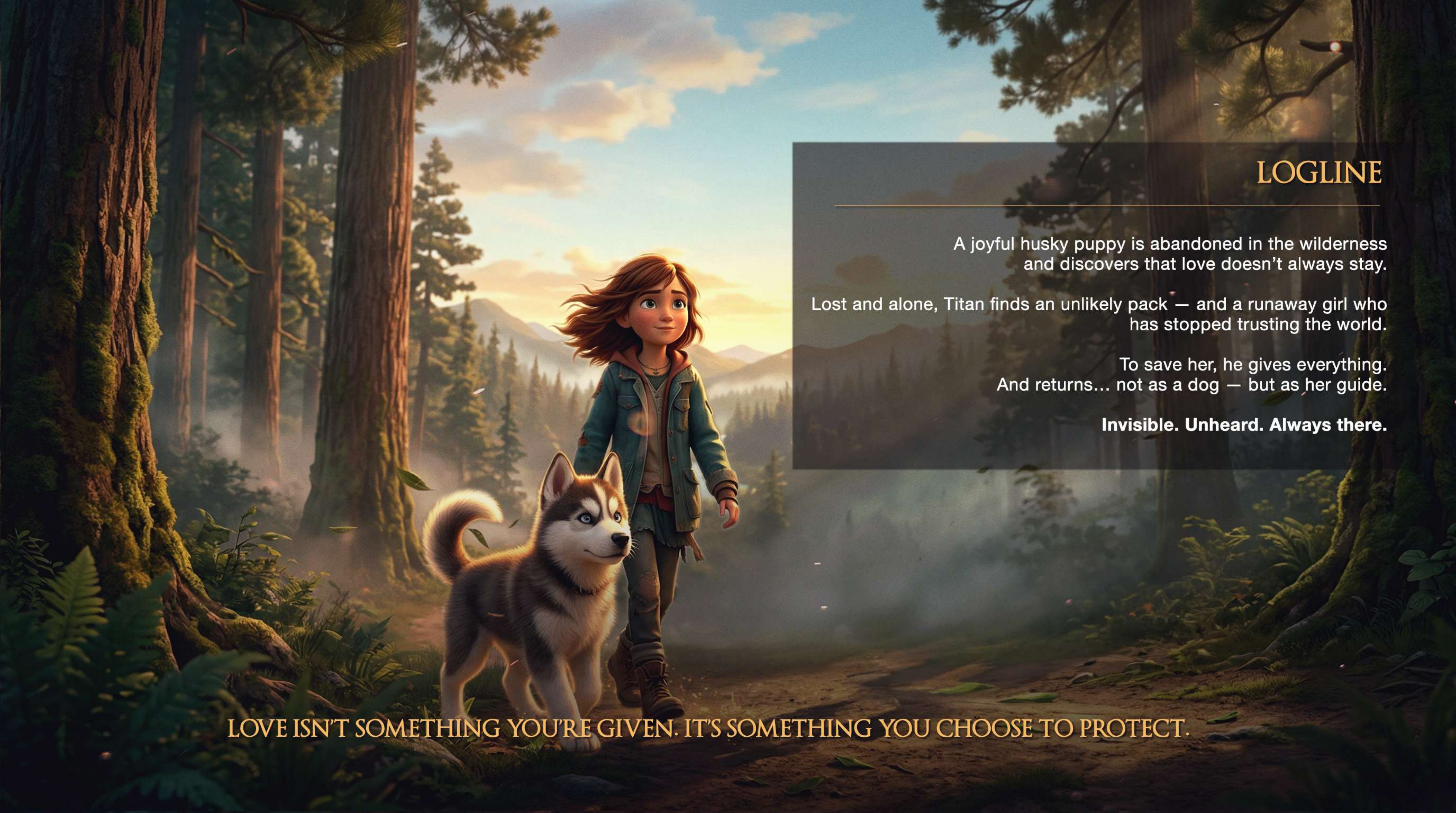


# TITAN

A STORY ABOUT FINDING YOUR WAY BACK TO LOVE



DESTINY  
ENTERTAINMENT



## LOGLINE

A joyful husky puppy is abandoned in the wilderness and discovers that love doesn't always stay.

Lost and alone, Titan finds an unlikely pack — and a runaway girl who has stopped trusting the world.

To save her, he gives everything. And returns... not as a dog — but as her guide.

**Invisible. Unheard. Always there.**

LOVE ISN'T SOMETHING YOU'RE GIVEN. IT'S SOMETHING YOU CHOOSE TO PROTECT.

# CHARACTERS



## TITAN THE HEART

---

A joyful, unstoppable husky puppy who believes love is simple:  
You stay. You protect. You don't give up.

Even after being abandoned, Titan chooses to love again —and becomes something more than a hero...  
He becomes a guide.

## LUNA THE SOUL

---

A runaway girl who has learned to protect herself by shutting the world out.

She doesn't need saving.  
She needs to learn how to feel again.

Titan becomes her guide.

## NALA THE CHAOS

A tiny black kitten who is absolutely convinced she is a dog.

Fearless. Dramatic. Completely wrong about everything — and somehow... always right when it matters.



## REX THE SURVIVOR

A hardened stray who trusts no one and believes the world is simple:  
Eat. Survive. Don't get attached.

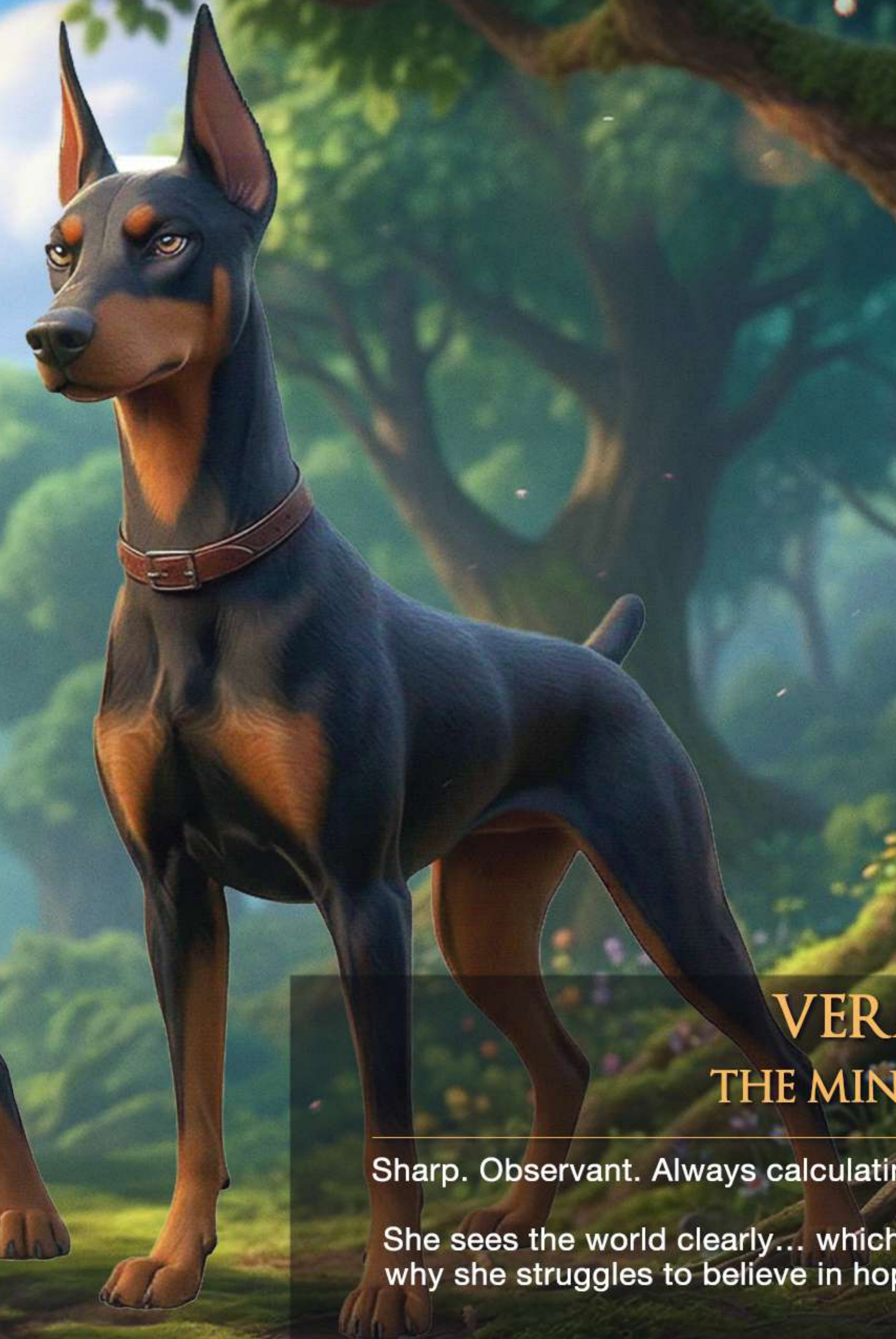
Titan challenges everything he believes.



## VERA THE MIND

Sharp. Observant. Always calculating.

She sees the world clearly... which is why she struggles to believe in hope.



# MARKET OPPORTUNITY

## FAMILY ANIMATION IS THE MOST RESILIENT GENRE

- Consistent global box office performance
- Holiday releases dominate annual box office
- Strong downstream revenue (streaming, licensing, merchandising)
- Cross-generational audience appeal

### EFFICIENT IP-BASED COMPARABLES

Lower budgets, strong returns, licensing/merchandising potential

Film	ProdCo/Studio	Budget	Global Box Office	ProdCo/Studio
PAW Patrol: The Movie	Spin Master/Paramount	\$26M	\$144.3M	Franchise efficiency
PAW Patrol: The Mighty Movie	Spin Master/Paramount	\$30M	\$201.7M	Sequel growth
Ne Zha 2	Beijing Enlight Media	\$80M est.	\$2.2B+	Record-breaking global hit
Spider-Man: Into the Spider-Verse	Sony Pictures Animation	\$90M	\$384.3M	Oscar-winning innovation
The Mitchells vs. The Machines	Sony Pictures Animation	\$70M	\$150M (Netflix)	Netflix cultural impact
The Garfield Movie	Columbia/Sony	\$60M	\$255M	Legacy IP performance
Sonic the Hedgehog 2	Paramount	\$90M	\$405.4M	Strong global IP
The Super Mario Bros. Movie	Illumination/Universal	\$100M	\$1.36B	Billion dollar IP
Sing 2	Illumination/Universal	\$85M	\$404.5M	Broad commercial appeal
Migration	Illumination/Universal	\$72M	\$300.5M	Original family success
The Croods: A New Age	DreamWorks/Universal	\$65M	\$227.4M	Sequel resilience



## WHY THIS FILM WINS A GLOBAL FAMILY EVENT FILM

- Animal-led storytelling = global accessibility
- Strong emotional core + humor balance
- High repeat viewing potential
- Pixar-level emotion + Illumination-level scale

## FRANCHISE POTENTIAL BUILT AS A LONG-TERM IP

Sequels •

Spin-off series •

Sponsorship & Branding •

Consumer products •

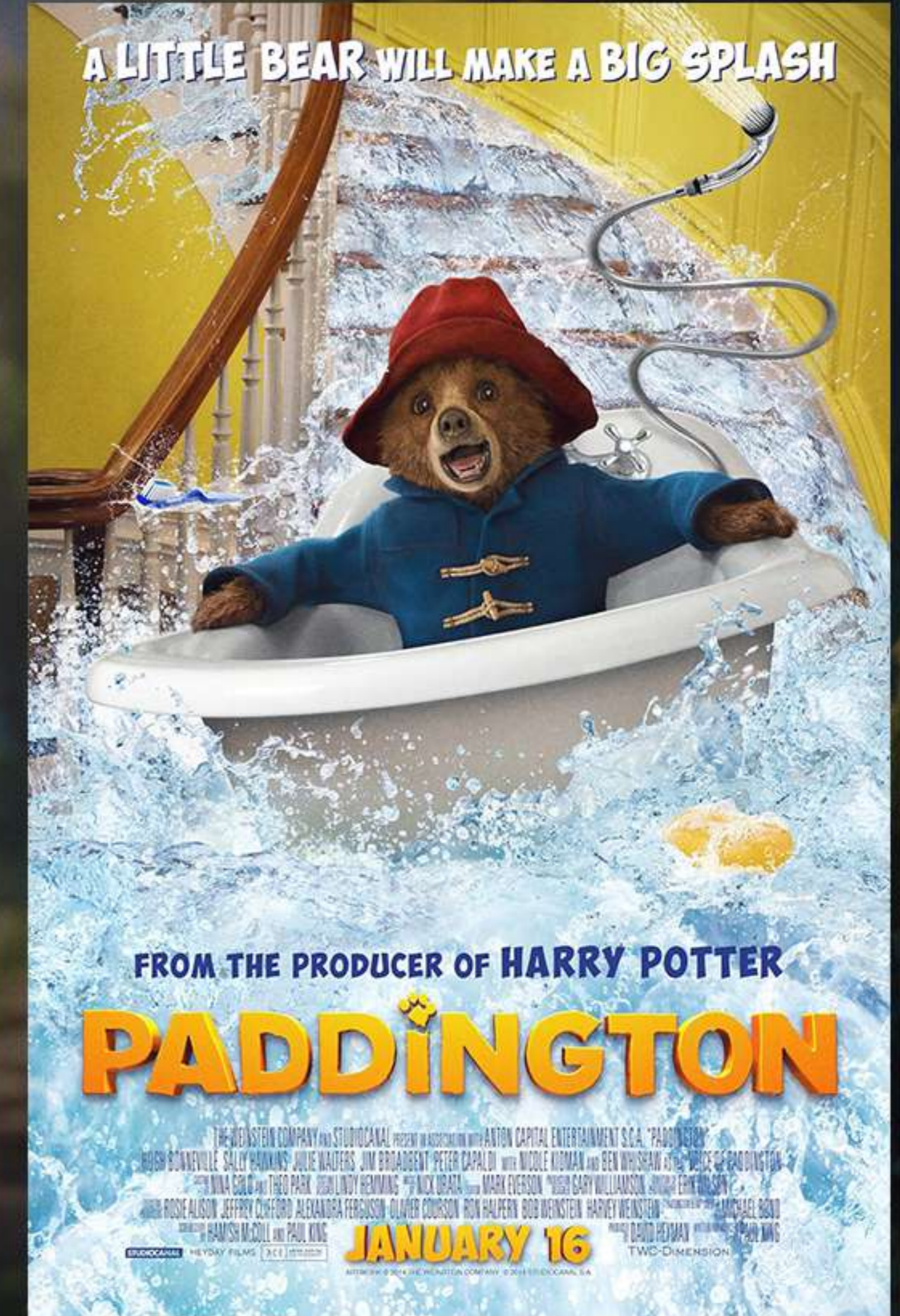
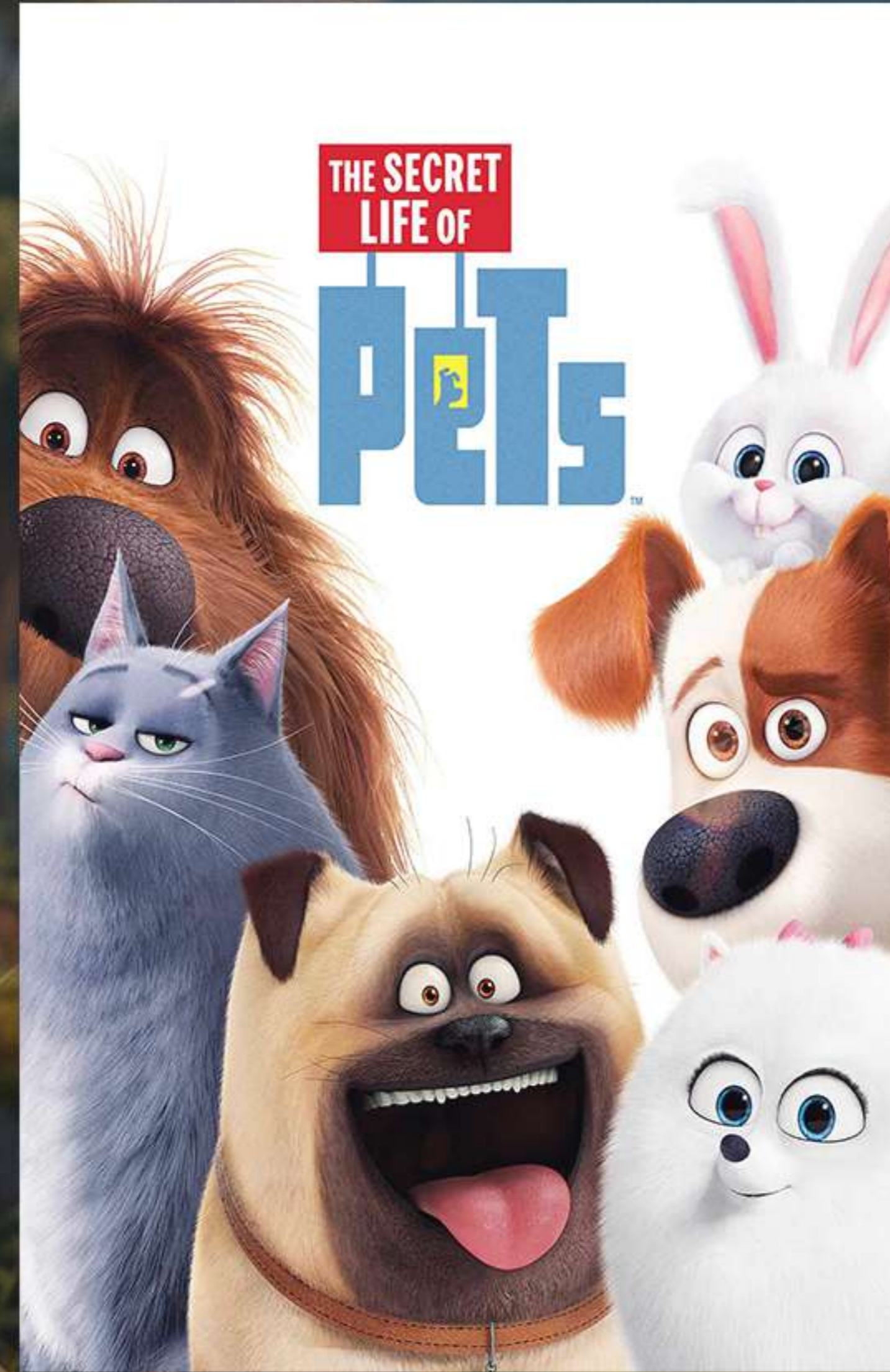
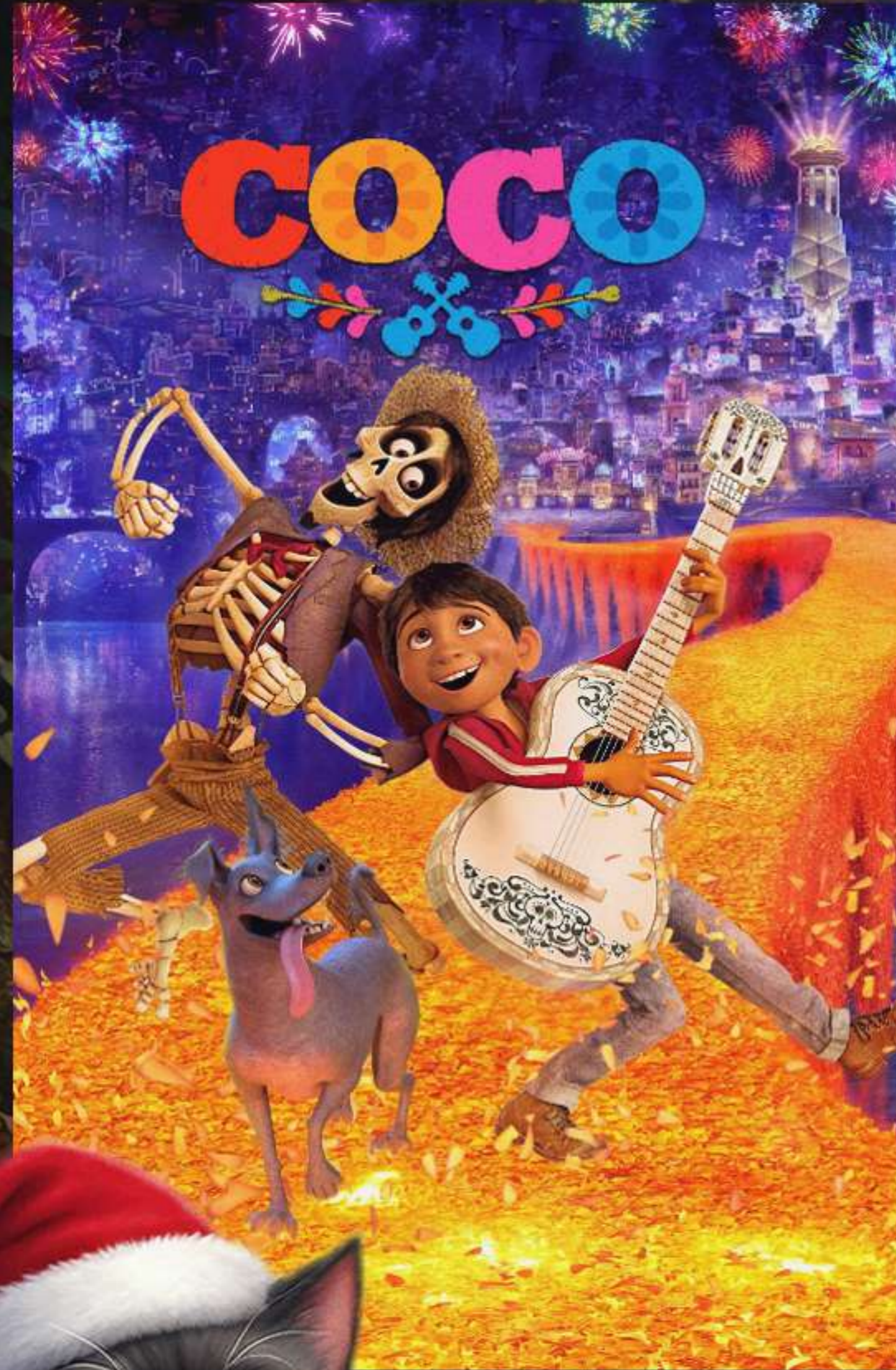
Gaming / interactive •



TITAN IS A CHARACTER-DRIVEN FRANCHISE WITH GLOBAL REACH

# COMPARABLES

PROVEN GENRE & THEME



UNIVERSAL THEMES (LOVE, BELONGING, REDEMPTION) EMOTION + HUMOR + ANIMALS - SCALABLE GLOBAL IP

# TECHNOLOGY ADVANTAGE

## REVOLUTIONARY AI-DRIVEN PRODUCTION

### Traditional Animation Pipeline

Concept

→ Storyboarding

→ Modeling

→ Rigging

→ Animation

→ Lighting

→ Rendering

→ Post-production

- Long production cycles (24–36 months)
- High iteration cost
- Linear workflow bottlenecks

#### SPEED

FASTER TURNAROUND  
RAPID ITERATION

FASTER - SMARTER - MORE EFFICIENT



#### COST

OPTIMIZED PRODUCTION BUDGET  
REDUCED INEFFICIENCIES

### TITAN AI-Driven Pipeline

Concept

→ AI-Assisted Previs

→ Real-Time Animation

→ Automated Iteration

→ AI Lighting & Rendering

→ Final Output

- Up to 60% faster production
- Real-time iteration
- Scalable workflow

#### QUALITY

FEATURE-LEVEL CINEMATIC OUTPUT  
ARTIST-CONTROLLED RESULTS



# DISTRIBUTION STRATEGY

## WIDE U.S. THEATRICAL RELEASE

---



- **Target: 2,500+ screens (AMC & partners)**
- **Release window: Christmas 2026**
- **Global rollout via international distributors**

# TEAM

---

## HECTOR ECHAVARRIA

---

WRITER, PRODUCER & DIRECTOR

Héctor Echavarría is an Argentine industry veteran, founder of Destiny Entertainment. He has produced films for major studios including Lionsgate, Sony. He was a key producer behind AMC's To Die For slate, helping launch its successful Horror Monthly initiative. He holds an exclusive nationwide theatrical distribution deal with AMC and is currently developing new projects with legendary producer Ronald Shusett (Alien, Total Recall).

## PHIL CUNNINGHAM

---

HEAD OF ANIMATION

Animation director and supervisor known for his work on David, with extensive experience leading performance-driven animation across feature productions. Specializes in character storytelling and high-end animated workflows.

## STEPHEN MATTHEW GUSTAFSON

---

VISUAL EFFECTS

Visual effects artist known for his work on Finding Dory, Coco, and Soul. Expert in cinematic VFX and advanced rendering for premium animated features.



# TEAM

---

## SHAUN GALINAK

---

### VISUAL EFFECTS

An effects technical director who contributed effects work to over 600 shots across 15 productions at Pixar. He won a 2018 Annie Award in Outstanding Achievement, Animated Effects in an Animated Production for his work on Coco, other credits include Incredibles 2 and Light Year.

## IVAN GREYLIN

---

### TECHNICAL LEAD (AD)

Multidisciplinary filmmaker with 20+ years across film, television, and broadcast production. Specialist in cinematography, lighting, and advanced production workflows, supporting scalable, technology-driven filmmaking.

## COLETTE AGUILAR

---

### EXECUTIVE PRODUCER, HEAD OF DISTRIBUTION

With over 20 years of experience in film and television, and in-depth knowledge of international financing, production, acquisitions, and global sales, supported by long-standing relationships with senior executives at major studios, networks, and streaming platforms worldwide. Co-Founder and CEO of Moonrise, an international sales and production company with offices in Madrid and Miami, with 40+ executive producer and sales credits include Momentum, The Etruscan Smile, and Marlowe.

# IMPACT & MARKETING STRATEGY

## BEYOND ENTERTAINMENT — A NATIONAL SOCIAL IMPACT CAMPAIGN

«*TITAN*» is positioned as more than a film. It is a purpose-driven platform aligned with real-world causes:  
PET ADOPTION · ANIMAL WELFARE · ANTI-ABANDONMENT AWARENESS

### CORE INITIATIVES

#### “TITAN HOME FOR CHRISTMAS”

National adoption campaign in partnership with shelters

- Co-branded adoption drives across the U.S

#### #MyTitanStory

User-generated campaign celebrating rescue & adoption stories

- Scalable, emotional, viral content engine

### ADOPT, DON'T ABANDON” PSA

#### Cause-driven messaging distributed across:

- Theatrical (pre-roll)
- Digital platforms
- Partner organizations

### CHARITY & CORPORATE PARTNERSHIPS

#### Collaborations with:

- Pet brands (Purina, Mars, Chewy, Petco)
- Animal welfare organizations
- Donations tied to campaign & audience engagement

### COMMUNITY ACTIVATIONS

#### Shelter events, screenings, and local partnerships

- Grassroots engagement + local media amplification



«*TITAN*» IS NOT JUST A FILM RELEASE. IT IS A NATIONWIDE MOVEMENT WITH MEASURABLE SOCIAL IMPACT.

# BUDGET

## PRODUCTION + P&A STRUCTURE

---

- Production Budget: \$20M
- P&A Budget: \$20M
- Total Investment: \$40M

## INDUSTRY BENCHMARK:

---

- \$60M–\$150M per comparable animated feature
- «TITAN» delivers premium animation with significantly higher capital efficiency

## EFFICIENT VS INDUSTRY BENCHMARK:

---

- Comparable films: \$60M–\$150M
- «TITAN» achieves similar quality at significantly lower cost



# FINANCING STRUCTURE

## EQUITY-BASED FILM FINANCING MODEL

- Investors participate through a dedicated SPV (LLC)
- Ownership of film IP allocated pro rata to investment
- Returns distributed through standard recoupment waterfall

## STRUCTURE DESIGNED TO:

- Align investor and producer incentives
- Enable potential tax efficiency (incl. Section 168(k), subject to eligibility)
- Meet institutional financing standards

# RISK MITIGATION

## STRUCTURED FOR CAPITAL PROTECTION

- Completion bond (delivery guarantee)
- Controlled budget & cost discipline
- Wide domestic release
- Scalable production model
- Proven genre demand

DOWNSIDE PROTECTED. UPSIDE SCALABLE.



# INVESTMENT OPPORTUNITY

## JOIN A GLOBAL FAMILY FRANCHISE AT ORIGIN:

- \$40M total capitalization
- Equity participation in IP
- Structured waterfall returns
- Strong theatrical + ancillary upside

## A RARE OPPORTUNITY TO INVEST IN:

- Premium animation IP
- Efficient production model
- Global commercial positioning

TITAN IS NOT JUST A FILM. IT'S THE BEGINNING OF A FRANCHISE.



# CONTACT

**MOONRISE**

COLETTE AGUILAR

President of International Sales  
+1 (645) 224-8295  
colette@moonrisepictures.eu

**TITAN**

**DESTINY**  
ENTERTAINMENT

HECTOR ECHAVARRÍA

Producer  
+1 (310) 918-6421  
echavarriafilms@gmail.com

# TITAN

A STORY ABOUT FINDING YOUR WAY BACK TO LOVE

